



BEAL HIGH SCHOOL



**Public Examinations
2011**

Beal High School Public Examination Results 2011

The following pages provide a full analysis of our students' achievements in the recent public examination sessions of Summer 2011. Due to the early production of this booklet, some local and national data is not yet available. We have, in these instances, included comparisons with 2010 data.

		page
Key Stage 3 assessments		2
Key Stage 4 results		5
Sixth Form -	Vocational Course results	7
	A2 level results	8
	AS level results	9
Statistics in brief		10
Home Language Results		11
Student Destinations		12



End of Key Stage 3 Assessment Results Comparison 2011/2010

These tables show the percentage of Year 9 pupils achieving each level at the school in 2011/2010.
The figures may not total 100% due to rounding.

TEACHER ASSESSMENT													
	Percentage at each level												
	W	1	2	3	4	5	6	7	8	EP	Disapplied	Absent	
English 2011	0	1	2	1	8	46	36	6	0	0	0	0	
<i>English 2010</i>	0	0	0	1	10	45	35	7	0	0	2	0	
Mathematics 2011	0	0	2	1	5	13	36	17	25	0	0	0	
<i>Mathematics 2010</i>	0	0	0	3	8	9	27	30	21	0	2	0	
Science 2011	0	1	2	5	9	33	29	21	0	0	0	0	
<i>Science 2010</i>	0	0	0	0	6	44	21	27	0	0	2	0	

BEAL TEST RESULTS (replacing SATs)										
	Percentage at each level									
	Below 3 (4*)	3	4	5	6	7	8	Disapplied	Absent	
English 2011	2		10	47	32	7		3	0	
<i>English 2010</i>	8		4	50	26	9		2	0	
Mathematics 2011	0	1	10	8	29	33	17	3	0	
<i>Mathematics 2010</i>	0	4	5	8	28	28	24	2	0	
Science 2011	0	0	8	9	41	38		3	0	
<i>Science 2010</i>	0	0	7	43	23	24		2	0	

Figures may not equal 100% due to rounding

BEAL TEST RESULTS (replacing SATs)										
	Percentage AT OR ABOVE each level									
	Below 3 (4*)	3	4	5	6	7	8	Disapplied	Absent	
English 2011	101		96	86	39	7		3	0	
<i>English 2010</i>	99		89	85	35	9		2	0	
Mathematics 2011	101	98	97	87	79	50	17	3	0	
<i>Mathematics 2010</i>	99	97	93	88	80	52	24	2	0	
Science 2011	100	97	97	89	79	38		3	0	
<i>Science 2010</i>	99	97	97	90	47	24		2	0	

Figures may not equal 100% due to rounding

BEAL TEST RESULTS (CORE)

Percentage achieving level 5 or above			
	2011	2010	Difference
English	86	85	+1
Mathematics	87	88	-1
Science	89	90	-1

Foundation Subjects – Teacher Assessments

TEACHER ASSESSMENT													
	Percentage at each level												
	W	1	2	3	4	5	6	7	8	EP	Disapplied	Absent	
Design & Technology 2011	0	0	0	0	7	35	56	3	0	0	0	0	
<i>Design & Technology 2010</i>	<i>0</i>	<i>0</i>	<i>0</i>	<i>0</i>	<i>3</i>	<i>18</i>	<i>55</i>	<i>23</i>	<i>0</i>	<i>0</i>	<i>1</i>	<i>0</i>	
Geography 2011	0	2	1	1	4	21	49	19	3	0	0	0	
<i>Geography 2010</i>	<i>0</i>	<i>0</i>	<i>0</i>	<i>1</i>	<i>5</i>	<i>31</i>	<i>46</i>	<i>13</i>	<i>2</i>	<i>0</i>	<i>2</i>	<i>0</i>	
History 2011	0	2	1	0	6	24	44	23	0	0	0	0	
<i>History 2010</i>	<i>0</i>	<i>0</i>	<i>0</i>	<i>2</i>	<i>9</i>	<i>38</i>	<i>40</i>	<i>8</i>	<i>0</i>	<i>0</i>	<i>2</i>	<i>0</i>	
Information Technology 2011	0	0	2	2	29	44	21	1	0	0	0	0	
<i>Information Technology 2010</i>	<i>0</i>	<i>0</i>	<i>0</i>	<i>0</i>	<i>26</i>	<i>54</i>	<i>15</i>	<i>1</i>	<i>0</i>	<i>0</i>	<i>2</i>	<i>0</i>	
Modern Foreign Languages (#) 2011	0	2	0	7	11	46	28	2	0	0	2	0	
<i>Modern Foreign Languages (#) 2010</i>	<i>0</i>	<i>0</i>	<i>0</i>	<i>8</i>	<i>11</i>	<i>47</i>	<i>27</i>	<i>4</i>	<i>0</i>	<i>0</i>	<i>4</i>	<i>0</i>	
Art 2011	0	1	0	1	10	47	29	13	1	0	0	0	
<i>Art 2010</i>	<i>0</i>	<i>0</i>	<i>0</i>	<i>1</i>	<i>8</i>	<i>37</i>	<i>44</i>	<i>8</i>	<i>1</i>	<i>0</i>	<i>0</i>	<i>0</i>	
Drama 2011	0	1	2	2	13	72	10	0	0	0	0	0	
<i>Drama 2010</i>	<i>0</i>	<i>0</i>	<i>0</i>	<i>0</i>	<i>4</i>	<i>18</i>	<i>67</i>	<i>9</i>	<i>0</i>	<i>0</i>	<i>1</i>	<i>0</i>	
Music 2011	0	1	2	0	24	51	18	3	2	0	0	0	
<i>Music 2010</i>	<i>0</i>	<i>0</i>	<i>0</i>	<i>2</i>	<i>11</i>	<i>56</i>	<i>22</i>	<i>7</i>	<i>0</i>	<i>0</i>	<i>2</i>	<i>0</i>	
Physical Education 2011	0	1	0	0	2	30	62	6	0	0	0	0	
<i>Physical Education 2010</i>	<i>0</i>	<i>0</i>	<i>0</i>	<i>1</i>	<i>0</i>	<i>30</i>	<i>53</i>	<i>14</i>	<i>2</i>	<i>0</i>	<i>0</i>	<i>0</i>	
Religious Education 2011	0	0	2	3	13	28	31	14	9	0	0	0	
<i>Religious Education 2008</i>	<i>0</i>	<i>0</i>	<i>0</i>	<i>1</i>	<i>10</i>	<i>28</i>	<i>31</i>	<i>20</i>	<i>7</i>	<i>0</i>	<i>2</i>	<i>0</i>	

- W represents pupils who are working towards level 1, but have not yet achieved the standards needed for level 1.
- EP represents exceptional performance.
- * represents pupils who were not entered for the tests because they were working below level 3 in mathematics or science or below level 4 in English; pupils awarded a compensatory level from the tests; and pupils entered but not achieving a level from the tests.
- # in modern foreign languages, level 4 and 5 represent achievement at the nationally expected standard for most 14-year-olds, as MFL's are not introduced until year 7.

**Level 5+ percentages (Foundation Subjects)
(2010 - 11 comparison) (Beal High School)**

Subject	2011 level 5+ percentage	2010 level 5+ percentage	Difference
Technology	93	96	-3
Geography	92	92	0
History	91	86	+5
IT	66	70	-4
MFL	77	78	-1
Art	89	90	-1
Drama	83	94	-11
Music	74	85	-11
PE	97	99	-2
RE	82	86	-4

SUCCESS AT KEY STAGE 4 – 2011

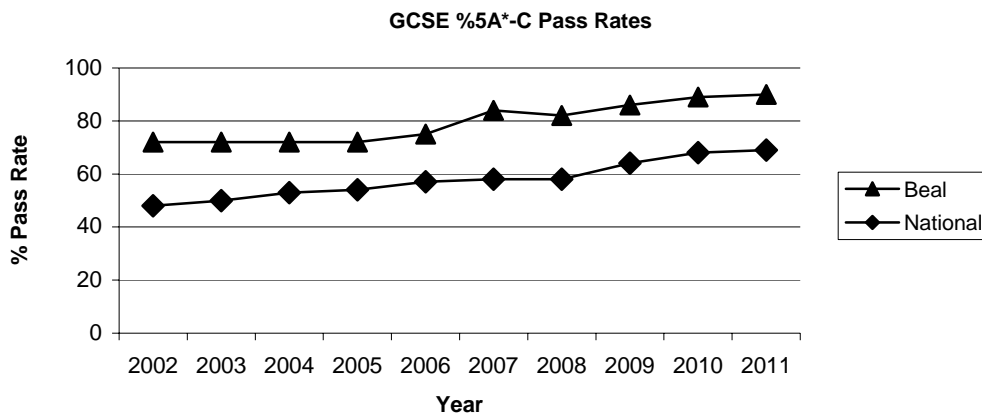
The GCSE results were again excellent, and the school improved its 5+A*-C pass rate to 90%. All KS4 results listed below are provisional.

GCSE SUMMARY TABLE

Pupils (percent)	Entered for equiv. 5+ GCSEs/BTEC	Achieving 5+ A*-C	Achieving 5+ A*-C (incl English & Maths)	Achieving 5+ A*-G	Entered for 1+ GCSE	Achieving 1+ A*-G
School 2011 interim	97	90	71	96	99	99
England Average 2010	94	62	69	91	89	87

PERCENTAGE OF STUDENTS OBTAINING 5 A* -C PASSES AT GCSE

	2002	2003	2004	2005	2006	2007	2008	2009	2010	2011
Beal	72	72	72	72	75	84	82	86	89	90
National	50	52	54	56	57	58	58	64	68	68



GCSE / BTEC Subject Grades - Grade Totals
Students in year 11 (244)

GCSE/Double GCSE	A*	A	B	C	D	E	F	G	U	Entries
Art & Design	7	8	14	15	0	1	0	0	0	45
Art & Design Graphics	0	0	1	0	2	1	0	0	0	4
Art & Design Photog.	5	5	3	5	1	0	0	0	0	19
Biology	20	34	2	0	0	0	0	0	0	56
Business St.	4	9	16	20	9	2	0	0	0	60
Catering St.	0	1	1	7	6	2	0	0	1	18
Chemistry	26	23	7	0	0	0	0	0	0	56
D & T Graphic Prods.	0	0	0	2	2	1	0	0	0	5
D & T Resistant Mat.	0	0	3	3	2	2	0	1	0	11
D & T Textiles	0	5	6	0	0	2	1	0	1	15
Drama	0	6	13	11	5	0	0	0	0	35
Economics	1	15	26	13	5	1	0	0	0	61
English Language	6	32	70	83	31	9	2	2	5	240
English Literature	16	38	64	61	30	8	2	2	2	223
French	3	7	9	6	9	5	1	2	0	42
Geography	19	35	21	16	8	2	0	0	0	101
German	1	8	24	45	30	5	0	0	0	113
History	11	36	26	19	11	15	9	7	1	135
Home Ec: Child Dev.	0	6	0	9	6	2	1	0	0	24
Hospitality and Cat. Dbl	0	18	9	1	0	0	0	0	0	28
I.C.T.	6	6	12	12	2	2	0	0	0	40
Mathematics	60	42	47	38	28	12	2	5	4	238
Media St.	1	21	30	19	8	2	0	0	0	81
Modern Greek	0	0	0	0	1	0	0	0	0	1
Music	0	4	4	2	2	0	0	0	0	12
Physics	21	25	10	0	0	0	0	0	0	56
Religious St.	1	4	4	4	3	1	0	0	0	17
Science Single	0	10	43	64	27	21	10	6	1	182
Science Additional	4	20	42	46	16	8	1	0	1	138
Sociology	4	13	23	8	8	5	0	0	0	61
Vision2Learn	0	0	10	0	0	0	0	0	0	10
BTEC/Dip Level 2	Distinction*	Distinction	Merit	Pass	Entries					
Art - Full	0	0	0	6	6					
Business - Full	14	1	9	6	30					
Business - Half	0	0	1	3	4					
Business - Quarter	0	1	2	8	11					
I.C.T. Pract. - Full	1	0	2	1	4					
I.C.T. Pract. - Half	0	0	1	1	2					
Media & Film - Full	0	4	5	4	13					
Media & Film - Half	0	0	2	2	4					
Media & Film - Quarter	0	0	0	4	4					
Media Diploma	0	1	2	6	9					
Science - Half	0	0	2	37	39					
Sport - Full	8	5	7	5	25					

SUCCESS IN THE SIXTH FORM – 2011

INTRODUCTION:

Beal offers an extensive academic programme; AS and A2 courses, and a growing number of Vocational Courses; Art, Business, ICT, Media and Sports Studies at BTEC Level 3 and Business at BTEC Level 2. In addition we provide a full programme of Curriculum Enrichment, Work Experience opportunities, and an Accelerated Learning Programme.

Vocational Courses

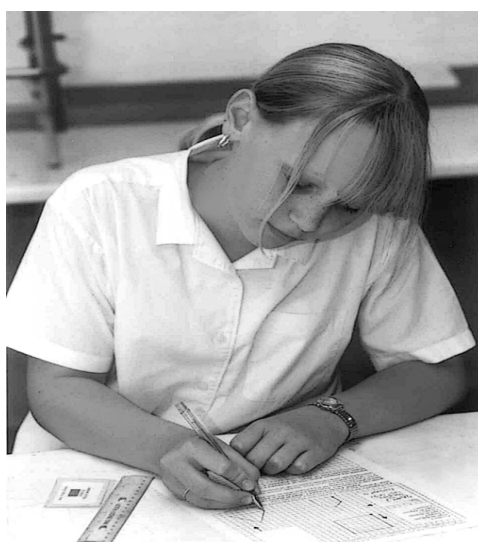
BTECs	DD	DM	MM	MP	PP	Entries
BTEC Business (Full)	3	0	1	1	1	6
BTEC I.C.T. (Full)	1	2	0	1	1	5
BTEC Media (Half)	0	--	1	--	0	1
BTEC Science (Full)	2	0	3	2	5	12
BTEC Science (Half)	2	--	0	--	1	3
BTEC Sports (Full)	9	1	2	0	3	15

Diplomas	DD	DM	MM	MP	PP	Entries
Media Diploma (Full)	0	--	3	--	3	6

D = Distinction

M = Merit

P = Pass



Subject Grades A2 Level - Grade Totals

Students in year 13 taking A2 courses (190)

	A*	A	B	C	D	E	U	Entries
A & D Photography	0	2	3	3	3	1	0	12
Biology	3	6	6	10	5	4	0	34
Business Studies	0	1	5	11	7	1	0	25
Chemistry	3	5	13	11	7	1	0	40
Comms & Culture	0	0	0	0	2	2	0	4
Computing	0	0	0	1	3	1	1	6
D&T Product Design	0	0	2	0	2	1	0	5
D & T Textiles	0	1	0	0	0	0	0	1
Drama	0	0	2	0	0	0	0	2
Economics	5	10	10	4	2	0	0	31
English Lang/Lit	0	0	1	7	1	1	0	10
English Literature	3	7	8	10	7	3	0	38
Fine Art	1	0	1	0	1	1	0	4
French	1	0	3	4	1	0	0	9
Geography	0	2	1	1	0	0	0	4
German	0	0	0	0	1	1	0	2
History	3	9	13	12	4	1	1	43
Law	0	1	3	2	4	1	0	11
Mathematics	17	17	21	14	7	7	1	84
Maths Further	0	4	7	1	0	0	0	12
Media Studies	1	2	5	6	1	1	0	16
Music	0	0	2	2	0	0	0	4
Physics	0	0	1	4	6	3	0	14
Politics	0	2	1	2	4	1	0	10
Psychology	0	3	6	2	3	0	0	14
Religious Studies	0	0	0	1	1	0	0	2
Sociology	3	8	5	5	3	1	0	25

Beal Average A2/AS Point Scores since 2005

	2005	2006	2007	2008	2009	2010	2011
Average point score	669	704	740	703	748	738	724

These figures have been calculated using the latest Dfes Point Score System.

Subject Grades AS Level - Grade Totals

Students in year 12 taking AS courses (215)

	A	B	C	D	E	U	Entries
A & D Photography	8	3	2	0	0	0	13
Biology	8	12	10	16	9	8	63
Business Studies	3	6	15	12	14	3	53
Chemistry	3	12	12	16	8	8	59
Computing	0	0	1	1	3	9	14
Critical Thinking	2	6	4	2	0	0	14
D&T Prod. Design	0	0	1	3	2	0	6
D&T Textiles	0	1	0	0	0	2	3
Drama	6	4	0	0	0	0	10
Economics	5	5	6	7	3	4	30
English Lang/Lit	0	3	4	7	4	1	19
English Literature	12	13	10	6	0	0	41
Fine Art	3	1	1	4	0	0	9
French	0	1	1	1	2	1	6
Geography	3	3	0	2	0	1	9
History	15	7	14	5	2	6	49
Law	0	4	4	4	2	1	15
Mathematics	31	23	12	15	8	4	93
Further Maths	3	2	2	1	0	1	9
Media Studies	1	9	13	6	2	0	31
Music	0	1	1	0	0	0	2
Physics	2	4	1	8	8	5	28
Politics	5	5	3	4	1	0	18
Psychology	4	8	12	7	6	2	39
Punjabi	0	0	1	0	0	0	1
Religious Studies	2	2	2	4	0	0	10
Sociology	10	5	19	9	0	2	45
Spanish	3	6	4	4	0	1	18
Turkish	0	1	0	0	0	0	1

Published Statistics

The Government uses certain statistics to compare performance of schools across the country. The following is a summary of all the statistics published in respect of Beal High School. Letters in brackets show DFES performance relative to national results. The 2011 data is provisional only and will certainly change after remarks and exams taken in other institutions are included.

Stage	Category	2008	2009	2010	2011
GCSE	Number of students aged 15	244	240	239	244
	Those achieving 5+A*-C or BTEC equivalent	82%	86%	89%	90%
	Those achieving 5+A*-C or BTEC equivalent, incl English & Maths	69%	69%	79%	71%
	Those achieving 5+A*-G or BTEC equivalent	98%	99%	98%	96%
	Those achieving an entry level qualification or more	99%	99%	100%	99%
	Average uncapped point score per student	438.6	468	496	496
	English and Maths Skills at Level 2	-	69%	80%	71%
	English and Maths Skills at Level 1	-	98%	98%	95%
	Level 2 (5 or more grades A*-C)	-	86%	89%	90%
	Level 1 (5 or more grades A*-G)	-	98%	98%	96%
	2 grades A*-C which cover the KS4 Science programme of study	-	73%	75%	83%
	A*-C in a Modern Foreign Language	-	47%	49%	41%
	A*-G in a Modern Foreign Language	-	51%	59%	63%
	Achieved English Bacc.	-	-	-	35%
At least one qualification	-	100%	100%	99%	
A LEVEL	Total eligible for GCE and/or VCE A/AS	174	189	182	190
	Average point score of those students	712	748	738	724
	Average point score per entry of those students	214	223	223	221
Applied Qualifications	Number of students studying BTECs	31	29	42	49
	Percentage of students achieving those AVQs	100%	100%	100%	100%
KS3	KS3 Eligible students	239	248	245	252
	% with level 5+ in English	87%	80%	85%	86%
	% with level 5+ in Maths	90%	87%	88%	87%
	% with level 5+ in Science	87%	84%	90%	89%
	%absent or disapplied in English	1%	2%	2%	0%
	% absent or disapplied in Maths	2%	2%	2%	0%
	% absent or disapplied in Science	1%	3%	2%	0%
Value Added Indicators	KS2 to KS4	1011.9	1013.9	1009.5	TBA
	KS4 to KS5	N/A	1018.9	993.8	TBA

Other Examination Results 2011

These results have been achieved by students in various year groups who can speak a language other than English or study other subjects independently at home.

GCSE	A*	A	B	C	D	E	F	G	U	Ent
Arabic	0	1	0	0	1	0	0	0	0	1
Dutch	0	1	0	0	0	0	0	0	0	1
German	1	0	1	0	0	0	0	0	0	2
Greek	0	0	0	0	1	0	0	0	0	1
Gujarati	0	1	0	0	0	0	0	0	0	1
Hinduism	1	1	1	1	0	0	0	0	0	4
Islamic Studies	0	0	1	1	0	0	0	0	0	2
Russian	0	0	0	0	1	0	0	0	0	1
Turkish	0	0	1	1	0	1	0	0	0	3

AS Level	A	B	C	D	E	U	Entries
Chinese	0	1	0	0	0	0	1
Dutch	0	1	1	1	0	0	3
Turkish	0	2	1	0	1	0	4

A2 Level	A	B	C	D	E	U	Entries
Panjabi	0	0	2	1	0	0	3

DESTINATIONS OF BEAL HIGH SCHOOL STUDENTS IN YEAR 11

Data supplied by Futures Careers Guidance, Ilford

	2007	2008	2009	2010	2011
Beal Sixth Form	84%	75%	84%	86%	80%*
Further Education	8%	15%	8%	10%	16%*
Employment/Training	4%	6%	4%	2%	2%*
Not known	4%	4%	4%	2%	2%*

** Provisional figures*

DESTINATIONS OF BEAL HIGH SCHOOL STUDENTS IN YEAR 13

Data supplied by Futures Careers Guidance, Ilford

	2007	2008	2009	2010	2011
Higher Education	93%	92%	93%	93%	94%*
Beal High School (Year 14)	1%	1%	1%	1%	1%*
Employment/Other	6%	7%	6%	6%	5%*

** Provisional figures*